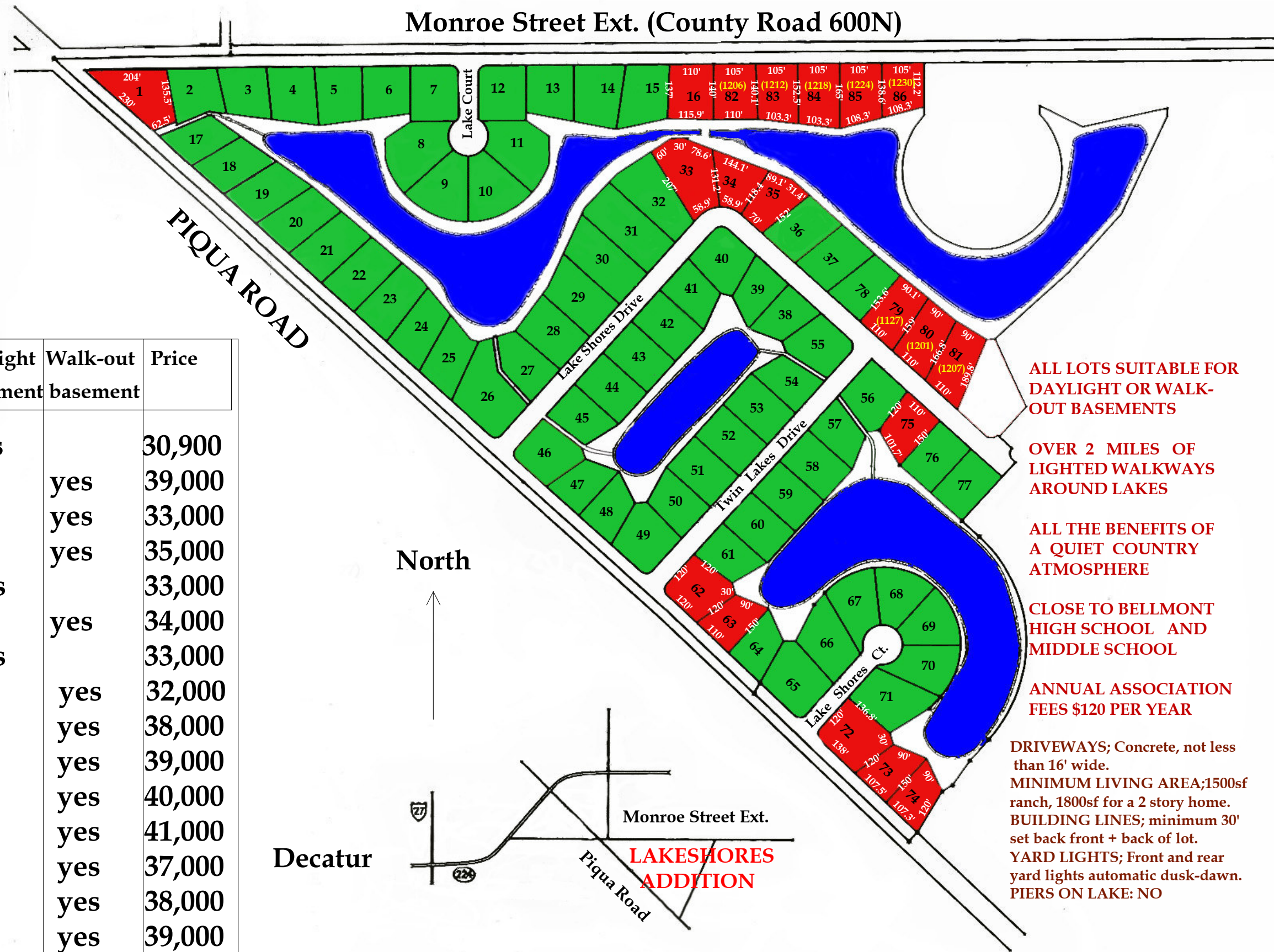


LAKESHORES ADDITION Decatur, In.



Lot #	Area (sf)	Lake Frontage	Corner	Cul-de-sac	Daylight basement	Walk-out basement	Price
1	20,165	no	yes		yes		30,900
16		yes				yes	39,000
34	13,305	yes				yes	33,000
35	13,568	yes				yes	35,000
62	16,804	yes	yes		yes		33,000
63	12,852	yes				yes	34,000
72	18,949	yes	yes	yes	yes		33,000
73	12,695	yes	spec	home		yes	32,000
75	13,832	yes				yes	38,000
79	15,580	yes				yes	39,000
80	15,999	yes				yes	40,000
81	17,321	yes				yes	41,000
82	15,050	yes				yes	37,000
83	15,153	yes				yes	38,000
84	16,465	yes				yes	39,000
85	15,939	yes				yes	40,000
86	13,166	yes				yes	37,000

ALL LOTS SUITABLE FOR DAYLIGHT OR WALK-OUT BASEMENTS

OVER 2 MILES OF LIGHTED WALKWAYS AROUND LAKES

ALL THE BENEFITS OF A QUIET COUNTRY ATMOSPHERE

CLOSE TO BELLMONT HIGH SCHOOL AND MIDDLE SCHOOL

ANNUAL ASSOCIATION FEES \$120 PER YEAR

DRIVEWAYS; Concrete, not less than 16' wide.
 MINIMUM LIVING AREA; 1500sf ranch, 1800sf for a 2 story home.
 BUILDING LINES; minimum 30' set back front + back of lot.
 YARD LIGHTS; Front and rear yard lights automatic dusk-dawn.
 PIERS ON LAKE: NO

For Additional Information contact:

RICE REALTORS

Office # (260) 724-2688
 Dave Rice cell# 223-2415

APPROVAL of IMPROVEMENTS by Architectural Control Committee. Construction plans and specifications, site plan showing improvements on lot must be submitted and approved prior to construction.